

[illegible]

Two Separate Shows

**Middlesex County
4-H Youth Center Log Cabin
645 Cranbury Road (Rt. 535)
East Brunswick, NJ 08816**

Sunday: Pablo Ortiz

Table of Contents

Welcome	3
Suggested Pet-Friendly Hotels	4-5
Show Hall Directions	6
Food Options / Map / East Brunswick and Spotswood	7-9
Things to See and Do	9-15
Show Information Auction, Going on at the Show.....	15
Budgie Information	16
Show Entry Information	
Categories, Divisions, - BAA, Rare, Pet.....	17-18
Entry Guidelines, Judging.....	18-19
Show Protocol, Winning Birds, Check In / Out, End of Show....	20-21
Awards Phase Out, Responsibility Waiver.....	22
Support our Advertisers and Vendors Reminder.....	22
Program of Events, Show Awards.....	32-33
Schedule of Classes (center of catalog)	34-35
Club/Show Leadership and Responsibilities.....	36
Ads from Club Members and Supporters	
Carl Comeau & Barbara Comeau.....	24-25
Bob & Jo Vargo.....	29
Janet Applegate, Joyce D'Accardi.....	37
Frank & Hiromi DeGaetano.....	42
Anthony Olszewski, Halberts, Chuck Romano, Barbara Gold....	45-48
Greg Arena, Norm & Joann Webster.....	51
Jeff Perry.....	56
Dawn Sandve, Kathy & Bob Thornber with Joe Riley.....	62-63
Slav & Mike Shcherbakov, Rafael & Wendy Garcia.....	65-66
Donor Ads	
World of Birds.....	23
California Spray Millet - Golden Farm Products.....	26
Red Bird Products, Star-Labs PrimaLac.....	27-28
Lizzie Mae's Bird Seed & Dry Goods, Sharon Hyde Toys.....	30-31
Nutritional Research, Volkman Seed Factory.....	38-39
Kaytee, Morning Bird.....	40-41
MDS Probe Light.....	43
L&M Bird Leg Bands, Inc.....	44
Birds by Joe.....	49
Oasis.....	50
Hagen Products, Scarlett/Moyer, Lafeber.....	52-54
Resolve Sustainable Solutions – Farmers' Helper.....	61
Abba Products Corp. (inside back cover)	67
Current Club Membership List	55
Membership Application & Dues	57-58
Membership Information	59-60
Ideal Budgie	64

ABBA PRODUCTS CORP.



**38 LONG AVE
HILLSIDE NJ 07205**

908-353-0669



Wishing the
Tri-State Budgerigar Society
a successful show and
a great time for all!

Rafael and Wendy
Garcia



Welcome

The Tri-State Budgerigar Society's officers and members wish to extend to you our warmest welcome together with our sincerest thanks for attending our 30th annual show. Unfortunately, in 2020, we were unable to host a show due to the COVID-19 pandemic, but we are excited to be able to put on shows again. Each day of our BAA affiliated shows will have a different judge.

2021 marks our 37th year as a club! Tri-State has come a long way from that date in February of 1984, when a group of people met with the desire to form a club. Many clubs in that time frame are no longer in existence and there are fewer shows. We are delighted that our club remains strong, and we have continued to hold monthly meetings via Zoom while we were unable to meet in person. The use of technology has actually enabled more hobbyists to participate in our meetings regardless of their location or time constraints and feedback has been incredibly positive. Over the years, our annual show has expanded to a double event. It gives our members great pleasure to continue the tradition of hosting a show so budgie enthusiasts can compete and enjoy hobby comradery.

Hopefully, new hobbyists will enjoy the experience and take advantage of an opportunity to learn about budgie breeding and showing. New members are always welcome. An application can be found in the catalog and on our display table, which you are invited to browse.

Best of luck to all exhibitors. May your birds win awards and give you a sense of accomplishment. Spend some time getting to know other breeders and make some new friends. After Saturday's show, exhibitors and club members are invited to join us at a reasonable priced area restaurant for a meal. It is an opportunity to relax after a long show day and to enjoy some time chatting with budgie friends old and new.

Thank you all for supporting Tri-State by traveling to our show and for donating items, time, services, birds, and so on. Because of all of you, we are able to host an annual show and keep the club going. Please look through this catalog and support the vendors listed within that have generously donated goods or services or gave the club special consideration or a discount. Let them know you saw their ad in the TSBS's show catalog so that the company will know their promotional gift to us has worked to bring them business.

Marcia Halbert / President, TSBS

For info call Marcia 732-416-0796, e-mail TRISTATEBUDGIE@aol.com or visit our Facebook or website at www.tri-statebudgie.org.

3

Pet Friendly Hotels

All are within 7 miles of show hall. None have been visited, negotiated with for rates or checked for renovation or availability. Some offer amenities like free breakfast, Wi-Fi, pools, exercise room. Exhibitors should make their own arrangements at one of these or one of their own choosing. Staybridge shows the lowest pet fee online of just \$25 of all of these but these fees of up to \$100 can be sometimes negotiable based on the type of pet and length of stay.

Holiday Inn Express & Suites Tower Center

4 Tower Center Boulevard (located by exit 9 off NJ TNPK)
East Brunswick, NJ 08816; Phone (732) 247-6800
<https://www.holidayinnnewbrunswick.com>

SureStay by Best Western – East Brunswick

764 Rt. 18 North, East Brunswick, NJ 08816
(800) 780-7234 (732) 238-4900
https://www.bestwestern.com/en_US/book/hotels-in-east-brunswick/best-western-east-brunswick-inn/propertyCode.31064.html

Days Inn by Wyndham – Monmouth Junction - Princeton

208 New Road, Monmouth Junction, NJ 08852 (Princeton)
(732) 798-3120
<https://www.wyndhamhotels.com/days-inn/monmouth-junction-new-jersey/days-in-monmouth-junction-princeton/overview>

Courtyard Cranbury South Brunswick (Marriott)

420 Forsgate Drive, Cranbury, NJ 08512-3506; Phone (866) 234-4633
<https://www.marriott.com/hotels/fact-sheet/travel/ewrbk-courtyard-cranbury-south-brunswick/>

TownePlace Suites Cranbury - South Brunswick (Marriott)

2535 US Highway 130 South, Cranbury, NJ 08512; Phone (888) 236 2427
<https://www.marriott.com/hotels/fact-sheet/travel/tntc-towneplace-suites-cranbury-south-brunswick/>

Residence Inn Cranbury - South Brunswick

2662 US Highway 130 North, Cranbury, NJ 08512
(888) 577-7005
<https://www.marriott.com/hotels/fact-sheet/travel/ttnri-residence-inn-cranbury-south-brunswick/>

Staybridge Suites Cranbury - South Brunswick

1272 South River Road, (Route 535) Cranbury, NJ 08512
Hotel Front Desk: (609) 409 7181

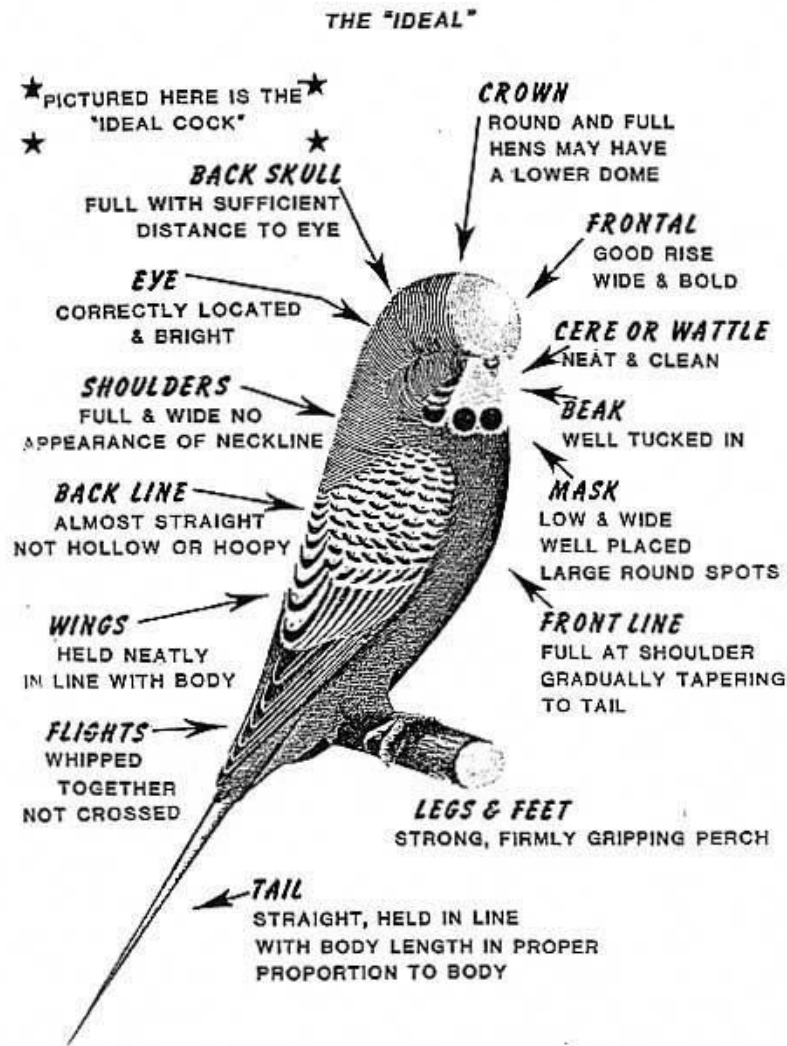
<https://www.ihg.com/staybridge/hotels/us/en/cranbury/jmbr/hoteldetail>

4

Best of Luck
to all Show Breeders from
Slav & Mike Shcherbakov
“S&M AVIARY”
ENGLISH BUDGIES BREEDERS
Band number “ABS S&M”

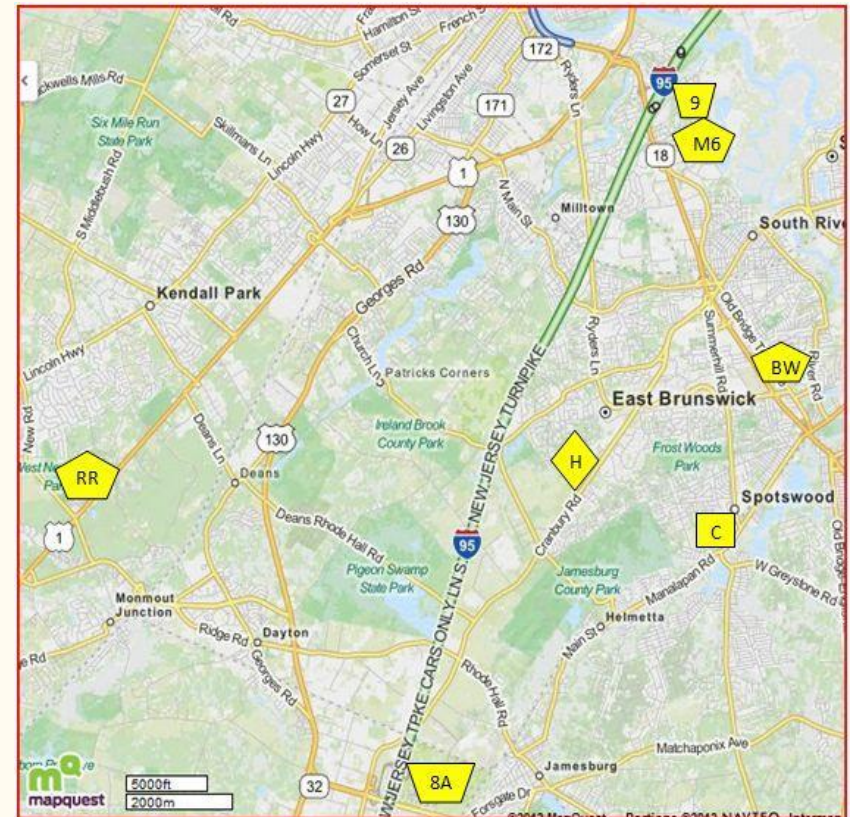


PLEASE VISIT US ON:
WWW.SMAVIARYBUDGIES.COM
FOR MORE INFORMATION, PICTURES, AND
UPDATES.



Best value is the Days Inn, but it is 64 miles and 15 minutes away. The best western is next in pricing, but it is next to an iHop Restaurant and is the closest at 3.5 miles and just a 7 minute drive. Staybridge Suites would be next in pricing and the rest are all higher in cost and pet fees.

Map shows relative distance between NJ Turnpike exits, Show Hall and suggested hotels.



NJ Turnpike **exit 9** is shown at the top right; **exit 8A** is the bottom center. **H** is the show hall at the Middlesex County 4H Youth Center Log Cabin. **BW** is the location of the East Brunswick Best Western Inn hotel. **M6** is the location of the East Brunswick Studio 6 and Motel 6 hotels. **RR** is the location of the Monmouth Junction Days Inn hotel. **Cranbury hotels** are all south of Rt. 32 and not shown on above map.

**Directions to the Middlesex County
4 H Youth Center Log Cabin
645 Cranbury Road (Rt. 535)
East Brunswick, NJ 08816**

The 4 H Youth Center Log Cabin is located adjacent to the Heavenly Farms land and the Middlesex County Fairgrounds. Of all the show halls we have used over the years, this one is the easiest to get to after getting off a major route. At most, you will have to take two roads after getting off the NJ Turnpike and you should arrive in about fifteen minutes or less. There are also numerous local roads that will get you to the show hall. Almost everyone has internet access for mapping services or navigational systems that can customize your trip, so we are posting only basic directions using the New Jersey Turnpike / I95 (toll).

**If you are heading North, take exit 8A
for Jamesburg / Cranbury from the right**

Follow signs for Rt. 32 West / Cranbury / Rt. 130 / South Brunswick. Turn right at traffic light onto Rt. 535 North / Cranbury-South River Road. Continue 4.8 miles. Turn left through chain link gate into the parking lot just before the Fern Road traffic light. (Note: After exiting at 8A, if you cross through or end up on Forsgate Dr. (Rt. 32), you are going the wrong way.)

**If you are heading South – take exit 9 for East Brunswick
/ Shore Points from the right**

Once you are on the exit ramp, head towards the left side of the toll booths and stay towards the left after paying the toll. Follow signs for East Brunswick / South River / Shore Points, and merge onto Rt. 18 South. Stay on Rt. 18 South for about 2.5 miles or so. Take the ramp on your right at the Raceway gas station toward Cranbury onto Rt. 535 South / Cranbury Road. Note that this road will be after Kohls, Lowes and the overpass for Milltown Road. Continue on this road for 3 miles but be sure to stay left on Cranbury Road where it breaks right for Dunhams Corner Road at the cemetery that will be on your right. Turn right through the chain link gate into the parking lot just past the traffic light for Fern Road.



*Welcome
Everyone*

*Best of Luck
Wished to
All Exhibitors*

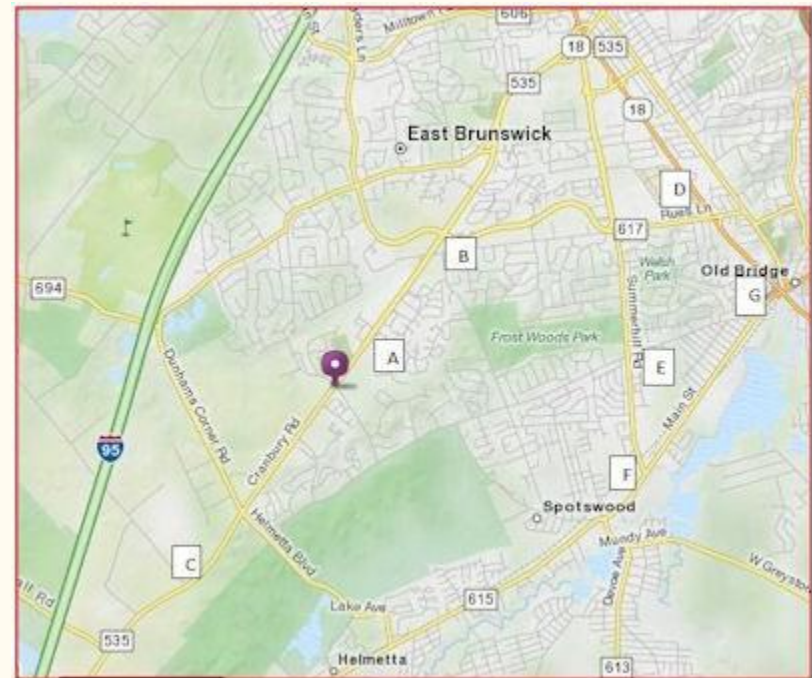
*Dawn
Sandve*

Food Options

Tri-State provides bagels, donuts, pastries, chips, coffee, water, soda, and such during the shows for our guests. The club will provide lunch at no charge to our judges, club members and exhibitors both days. Anyone else present may join us for lunch for a suggested donation of at least \$5.00 per person to help our club cover costs. Numerous places to eat in the surrounding area are listed in the catalog with a map to help you navigate your way if you choose to eat out. The restaurants listed first are closest to the hall. There are also fast food places like Dunkin Donuts, Starbucks, Wawas, Wendy's, McDonalds, Burger Kings, KFC, Boston Market, Chili's, Colonial Diner, Bonefish Grill, Carrabba's, Applebee's, Perkins, and many other restaurants. Places are located in either direction along Rt. 535, (also known as Cranbury Road, the road the show hall is on.), Ryders Lane and the Rt. 18 corridor that is north of Main St. and extends beyond the map area shown.

Map Showing Places to Eat

Show hall is pinned at the intersection of Fern and Cranbury Road.



Places to Eat – East Brunswick

A – Lexington Downs Shopping Center – Intersection of Cranbury Road and Lexington Avenue

Stefano's – lunch, dinner, salads, pizza, Italian

Boomerang Bagels – bagels, eggs, salads, grilled items, sandwiches

B – Civic Center (CVS) – Intersection of Cranbury Road and Rues Lane

Sandy's – breakfast, lunch, dinner, soup, burgers, subs, pizza, salads, pasta, wraps, paninis, and entrees. Great food, great prices, large portions; the waffles and fries are a must try. This place is a local favorite.

Casablanca – Moroccan cuisine

East Brunswick Chinese – standard Chinese sit down restaurant

Laffair II Bake Shop – all kinds of delectables

C – Davidsons Mill Plaza – Intersection of Cranbury Road and Davidson's Mill Road (GPS may show this as South Brunswick, Jamesburg, or Monroe Township)

Café Amici – lunch, dinner, pizza, salads, subs, Italian

Dunkin Donuts – you know what they have

D – Brunswick Square Mall – Intersection of Rues Lane and Rt. 18 – On southbound side

Cinnabon, Olive Garden, Charley's Philly Steaks, Pizzatella, Wok Express, Auntie Anne's Pretzels, Panera Bread, Red Robin, Bar Louie, Yogurt Dojo

Denny's, IHOP, Red Lobster across from the mall on the northbound side of Rt. 18 near the Best Western Motel.

G – Rt. 18 between Rues Lane and Main St. - On southbound side

Arooga's – sports bar, wings, burgers, soups, ribs

Chick Days
WITH FARMERS' HELPER

FARMERS' HELPER
ULTRAKIBBLE
FOR CHICKS

FARMERS' HELPER
BABYCAKE

- Supports Normal Avian Health
- Ready and Easy to Use with Minimal Waste
- Simulates Natural Foraging

Receive Sustainable Solutions
888-8FORAGE (888-836-7243)
info@foragecakes.com
www.foragecakes.com

Most of our meetings include time for "budgie banter," an open discussion where members can ask questions, admit problems, complain, boast, inform, suggest solutions, or offer friendly advice.

Newsletters are provided to members several times a year as a means of verifying decisions made and items completed. They usually run about 8 pages or more; serve as a reminder of upcoming events; provide members unable to attend particular meetings with a quick overview of club happenings and contain useful information. Included are guest articles, photos, quizzes, interesting websites, facts, member news and reports or news from officers and committees. The newsletter is normally e-mailed to members, but members can also purchase a subscription that will be sent by regular mail.

If you are interested in joining Tri-State, fill out a Membership Application and mail your payment with it to:

Tri-State Budgerigar Society
112 Richmond Ave.
Spotswood, NJ 08884

* * * * *

Feel free to attend a monthly meeting, have a cup of coffee, and meet our happy family of Tri-State members. The Tri-State Budgerigar Society is eager to have new hobbyists drop in for a visit or join the hobby.

An upcoming meeting will be our Zoom - "Cheep Talk" meeting at 7 p.m. on Tuesday, September 7, 2021

For additional events and meeting dates, sign up for our email notifications, visit our website or Facebook page.

If you are not close enough to our meetings and you don't have a club near you - consider forming a club of your own. It is easy to find others in your area by networking at shows; through the use of newspaper or online classifieds; Facebook and other social media; and even online local message boards or bulletin board postings at places you visit or shop at.

Places to Eat – East Brunswick

G – Rt. 18 between Rues Lane and Main St.
- On northbound side in the strip mall

Ichiban – Japanese restaurant with bar
Burger King – you know what they have
Brothers Pizza – Pizza and other Italian fare

- On northbound side closer to Rues Lane
Gusto Grill – Bar, sandwiches, burgers, American food

Places to Eat – Spotswood

E – Shoppes at Spotswood - ShopRite Shopping Center – intersection of Old Stage Road and Summerhill Road

Taverna Della Pizza and Italian Restaurant – salads, subs, pasta, soup, pizza, entrees
Tung Hsing House Chinese Restaurant – nice sit down place
Jersey Mike's – subs

F – Lower Summerhill Road at Main St.

MJ's - 19 Summerhill Road – bar, salads, pizza, pasta, soup, burgers, entrees; entertainment many evenings – next to Walgreens near Main St.
Gennaro's Italian Restaurant, Manhattan Bagel and Liu's Kitchen Chinese Restaurant In the strip mall across the street from MJ's and Walgreens on Summerhill Road near the Main St. traffic light.

Things to See and Do

Come to our show and make it a "Showcation." A few of the many things to do nearby are listed on the next few pages. Links are shown to help you plan your trip. Enjoy the show and your stay!

NEW! 100 Best Things to do in New Jersey

Janice Rogers, Editor of "Your RV Lifestyle," has given permission to use her awesome guide about the Garden State. Enjoy the read and go visit!
<https://www.your-rv-lifestyle.com/things-to-do-in-new-jersey/>

Beaches - Here are some of the top-rated beaches in the state:

Wildwood	Cape May	Point Pleasant
Wildwood Crest	Asbury Park	Beach Haven
Ocean City	Sandy Hook	Stone Harbor
North Wildwood	Belmar	Seaside Heights

Asbury Park, NJ – The Stone Pony, where Bruce Springsteen got his start; art and antique galleries, theaters; music venues; restaurants; nice beach with small boardwalk, mini golf, shops, food, Wednesday fireworks. Website: <https://www.cityofasburypark.com/328/Beach-Visitor-Information>

Belmar, NJ – Nice beach, fishing boats, marina, kayak rentals, a skateboard park, clubs, restaurants. Website: <http://belmar.com>

Cape May, NJ – Victorian homes to tour, bird watching, fishing boats, gardens, bed and breakfasts, shops, restaurants, and lighthouse; nearby - four wineries, Cape May Zoo (free), the Wildwoods, and Atlantic City. Website: <https://www.capemay.com/plan-your-visit>

Point Pleasant, NJ – Jenkinson's Boardwalk - Nice beach, rides, mini golf, games of chance, concession stands, restaurants, candy, ice cream, fishing boats. An aquarium with penguins, poison dart frogs, fish native to NJ waters, seahorses and other assorted inhabitants. Sunday night movies on the beach, Wednesday night concerts, Thursday fireworks. Website: www.jenkinsons.com

Sandy Hook, NJ – Arrive early for parking - seven-mile beach, surf casting, swimming; over 300 species of migratory birds; pristine holly forest; clothes optional beach. In nearby Highlands, the highest point on the eastern seaboard, is the first twin lighthouse ever built and the first to use kerosene and electricity; a maritime museum and many seafood restaurants. Website: <https://www.theopensuitcase.com/exploring-sandy-hook-nj-fun-things-to-do/>

Seaside Heights, NJ – Beach, boardwalk, water park, rides, arcades, mini golf, shops, clubs, restaurants, fishing boats, concessions and plenty more to do. Website: www.seasideheights.net

Wildwood, NJ – This actually encompasses three towns - Wildwood Crest, Wildwood, and North Wildwood. Nice very wide beaches, full boardwalk with rides, arcades, shops, games of chance, concessions and much more; near Atlantic City and Cape May. Website: www.wildwoodsnj.com

Membership Information

The membership of the Tri-State Budgerigar Society cordially invites you to attend one of our meetings. We would be delighted to see you and hope that you will find yourself among kindred spirits and join the club. The club attracts budgie enthusiasts from the NJ/ NY/ PA area and beyond. It includes members from all levels of the hobby, from junior and novices to intermediate and champion breeders, whose knowledge, experience, and leadership are invaluable to the beginning hobbyist. We also have a few strictly pet owners among us.

Meetings generally take place on the third Sunday of the month at 2:00 p.m. and are usually held at the home of one of the members or a Spotswood, NJ church hall. In addition, we have an annual picnic open to members, family, and friends at a central NJ park. The club provides beverages, hamburgers, hot dogs, paper goods and condiments. Everyone is asked to bring side dishes, appetizers, snacks, desserts, or a favorite dish to share. In lieu of a December meeting, we gather for brunch or dinner at an area restaurant for the holidays. Club members, family, and friends are all invited. Other club activities have been a member rare show in March and a member baby show and futurity in October at which we also enjoy Soup Share and Potluck Suppers so that all members may enjoy the social aspect and camaraderie of being part of a club. We have used Zoom during Covid-19.

Our annual sanctioned show takes place in July or August, and it became a two day event in 2012. The show has five BAA sponsored divisions for exhibitor bred birds. There are also two open pet divisions held at the Saturday show that are sponsored by our club for birds that do not have to have been bred by the exhibitor. Everyone is welcome to participate, including youngsters. Awards include various ribbons, medals, award certificates and Challenge Certificates. Birds are also generally available for sale and vendors may be present. At regular meetings, a member may give a presentation using live birds, charts, photographs, or other visual aids. Subject matter may be their area of interest or experience or a researched topic. Presentations have included egg development; specific mutations; aviary construction; soft food recipes and show preparation or even a quiz. Other topics have been bird photography; nutrition; edible plants and herbs; poisonous and hazardous substances; finding pet sitters and record keeping. Occasionally, guest speakers such as a judge or avian veterinarian are presenters or we go on a field trip to visit places such as the Raptor Trust in Millington, NJ or Arcadia Bird Sanctuary, previously located in Freehold, NJ.

2021 Membership Dues Rates

Options for E-mailed or printed newsletters and correspondence
(Please circle one and provide necessary information)

Junior: Any individual at least 7 years of age who will not reach an 18th birthday during the membership year.

E-mail is Free

Printed version is \$12 a year or \$24 for 2 years.

Regular: Any individual who will be age 18 or older during the membership year.

E-mail is \$20 a year or \$35 for 2 years.

Printed version is \$32 a year or \$59 for 2 years.

Dual: Two members of the same household that qualify for "regular" membership.

E-mail is \$30 a year or \$55 for 2 years.

Printed version is \$42 a year or \$79 for 2 years.

Foreign: Anyone whose address is outside the USA; except Canada.

E-mail is \$35 a year or \$65 for 2 years.

Printed version - contact the club for postal rates.

Memberships run from January 1 to December 31. Dues are expected to be paid in full by March 31 of each year unless selecting 2-year option. Additional adult household or partnership members may be added for \$10 per person, per year or \$15 for 2 years. Those joining the club for the first time later in the year, such as at a show, may keep that date as their membership period when they would be expected to renew. Dues are not prorated. When joining for the first time later in the year, the club will either send issues of our current newsletters, if available, or extend membership to the following year, depending on when the dues were received.

Notices are typically sent by regular E-mail. Newsletters are sent as a PDF, within E-mail. For anyone in the USA without access to E-mail and for those wanting a mailed printed copy, an additional charge of \$12 annually is currently added to cover postage and other costs.

Current club by-laws are posted online at:
<http://www.tri-statebudgie.org/pdfs/By-laws%20Nov.%202019%20Final%20Signed%20Version.pdf>

Contact Marcia Halbert regarding any questions about the club. Make checks payable to: **Tri-State Budgerigar Society**
c/o Marcia Halbert Phone: (732) 416-0796
112 Richmond Ave. tristatebudgie@aol.com
Spotswood, NJ 08884

Campgrounds – These have the most amenities within 30 miles. For more information, to make online reservations or to view a listing of other campgrounds go to: Website: www.newjerseycampgrounds.com

Pine Cone Resort

340 Georgia Road
Freehold, NJ 07728
(732) 462-2230

www.pineconenj.com

Tip Tam Camping Resort

301 Brewers Bridge Road
Jackson, NJ 08527
(732) 363-4036

www.tiptam.com

Butterfly Camping Resort

360 Butterfly Road
Jackson, NJ 08527
(732) 928-2107

www.butterflycamp.com

Indian Rock Family Campground

920 W. Veterans Highway
Jackson, NJ 08527
(732) 928-0034

<https://indianrockrvpark.com>

Casinos

Atlantic City, NJ – Free beach; casinos with slot machines, table games, sports betting; aquarium, outlet shopping, boardwalk, restaurants, night clubs, concerts, shows, museums, Absecon Lighthouse, fishing boats and more. Nearby is Cape May with Victorian era homes, Cape May Zoo, Wildwood Beach and Amusement Park, vineyards and Storybook Land. Website: www.atlanticcitynj.com

Bethlehem, PA – Wind Creek Bethlehem has table games, 3,000 slot machines, electronic blackjack and poker games, upscale restaurants and all the charm of historic Bethlehem.

Website: <https://windcreek.com/bethlehem>

Historical

Batsto Village – Hammonton, NJ - Historic Batsto Village is on Rt. 542 in the [Wharton State Forest](#) in Washington Township, which is in Burlington County. A working village; iron and glass work; shops. Website: www.batstovillage.org

Historic Smithville – Smithville, NJ - Historic Smithville is a thriving colonial village just 20 minutes from Atlantic City; open every day but Christmas. Colonial Inn Bed & Breakfast, 50 shops, eateries, car shows and more; wineries nearby. 1 North New York Rd. Website: <https://www.historicsmithville.com>

Museums

Wheaton Village – Millville, NJ – Museum of American Glass - over 6,500 objects on display, shopping glass blowing, folk artists. Wheaton Arts, 1501 Glasstown Road 800-998-4552 mail@wheatonarts.org.

Website: www.wheatonarts.org

Trenton City Museum – Trenton, NJ – Many any fine collections, musical performances, art exhibitions. It occupies the old mansion *Ellarslie* in Cadwalader Park. Use 299 Parkside Ave. for park entrance.

Website: www.ellarslie.org

Old Barracks Museum – Trenton, NJ – Revolutionary War buffs might enjoy a visit. The barracks predates the Revolutionary War and is located in downtown Trenton, next to the NJ State House.

Website: www.barracks.org

Horse Racing – for 2021 - you are urged to check before going!

Monmouth Park – Oceanport NJ – Live thoroughbred racing May into September on Sat. & Sun; also Fri. June thru August. Gates open 11:30 a.m.; post time 12:50 p.m. Simulcasting daily. Family Fun Day held noon to 4:00 p.m. every Sunday & holiday from Memorial to Labor Day; pony rides, clowns, free activities; music. Bluegrass Miniature Golf – two courses – daily. Address is 175 Oceanport Avenue.

732-571-5544. Website: www.monmouthpark.com

Freehold Raceway – Freehold, NJ – This 1/2-mile track features live Standardbred harness races for trotters and pacers Thurs. - Sat. from March into May and from August into December. Post time 12:30 p.m. The racetrack was established in 1853 and is open seven days a week and seven nights for year round thoroughbred and harness racing simulcasts. Route 9 & 33 732-462-3800

Website: www.freeholdraceway.com

Meadowlands Racetrack – East Rutherford, Harness racing begins in January and extends into August. Post time is 7 p.m. Racing Thurs.-Sat.; simulcasts daily. Dine at the award winning Pegasus or other restaurants.

2150 State Route 120 201-460-4079

Website: www.meadowlandsracetrack.com

2021 Membership Application

Your information is not shared outside the club

Name(s) _____

Mailing Address _____

City/State/Zip _____

Phone (____) ____-____ home Phone (____) ____-____ cell

E-Mail Address _____

If you do not use E-mail, you must select the printed option when joining.

BAA Code _____ ABS Code _____ Other Band Code _____

Primary Interest/Ownership: Do you breed your budgerigars? _____

Exhibition type (English) ____ Pet type (American) ____ Both types _____

Pet Owner Only ____ Future Exhibitor ____ Current Exhibitor _____

Referral List: Breeders, would you like to be added to our referral list of members? Your basic contact information would be given out to individuals seeking a breeder in their area for a young pet or perhaps looking for breeding stock. You may specify how people should contact you. You can change your mind at any time about being on or off the list.

Yes, add my name _____ No, do not give out my name _____

How did you find us? Website ____ Show ____ Fair / Family Day _____

Facebook ____ BAA ____ Pamphlet ____ Business Card _____

Birds USA ____ Referred by Member _____

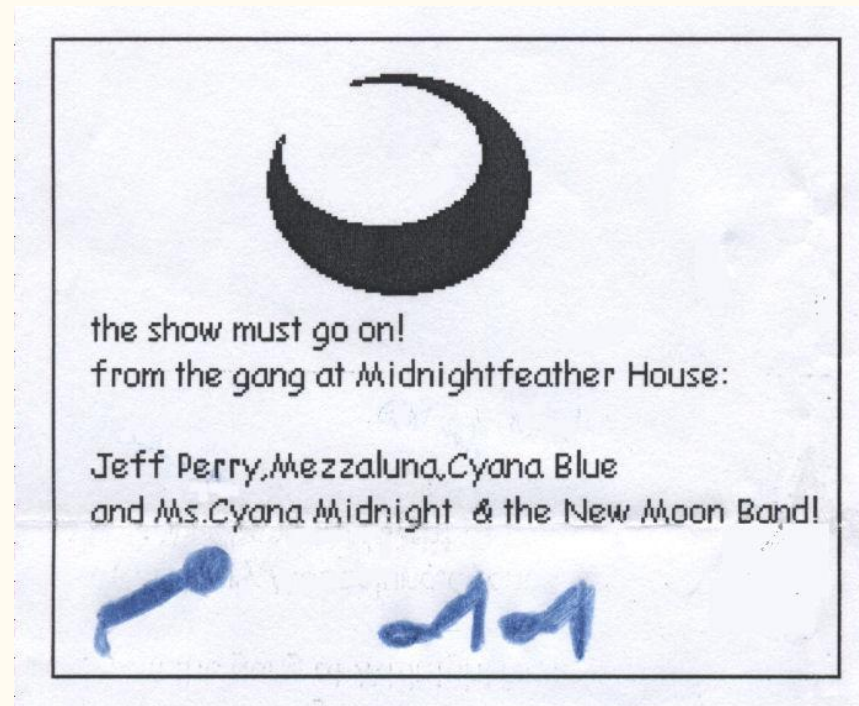
Level: Junior ____ Novice ____ Intermediate ____ Champion _____

Optional Add Ons:

New or renewal ad in the next show catalog. _____ full page \$20
Deadline is no later than one month before the show. Catalogs will be at show. Include \$5 for postage, if wanted, and not attending. _____

I am including an extra amount of \$_____ as a gift to the club toward expenses such as putting on an annual show, meeting space, educational materials, or other designated items. _____.

Let us know you have any questions, comments, suggestions, or concerns.



Shopping

This list was put together for those guests that may enjoy shopping more than budgie shows. Information was checked but be aware that stores come and go. Hours can also change at any time, so check before going.

Brunswick Square Mall – East Brunswick, NJ (65 stores, restaurants, and services). JC Penney, Macys, Barnes & Noble, Aeropostale, Old Navy, Amy's Hallmark, Bath & Body Works, The Children's Place, Famous Footwear, AMC Brunswick Square 13 movie cinema, jewelry stores, food and more - all on one ground floor - minutes from show. Other strip malls and restaurants, also the Best Western Hotel, are across the highway and nearby all along Rt. 18.

Address is 755 State Rt. 18 South, between Rues Ln. and Summerhill Rd.
Sun.-Thur. 11 a.m.-7 p.m.; Fri.-Sat. 10 a.m.-8 p.m.

Websites: <http://shopbrunswicksquare.com/>

Freehold Raceway Mall – Freehold, NJ – (230 stores, restaurants, and services). Second largest mall in NJ and one of the nicest malls in the area. Numerous stores like, Macy's, JC Penney, L.L. Beane, Apple, Lane Bryant, Lego, Michael Kors, Pandora, Build-A-Bear Workshop, Christmas Tree Shops, plenty of restaurants, a food court and even a carousel. Address is 3710 Rt. 9, located at Rt. 33 & Rt. 9.

Hours: Mon. to Sat. 10:00 a.m. – 9:00 p.m.; Sun. 11:00 a.m. – 7:00 p.m.

Website: www.freeholdracewaymall.com

Jackson Premium Outlets – Jackson, NJ – (70 stores, restaurants, and services) Coach, Reebok, Timberland, Under Armour, Maidenform, Hanes, Levi's, Disney Store, Gap and more. Located just minutes from Six Flags Great Adventure, Wild Safari and Hurricane Harbor at Address is 537 Monmouth Rd. (Rt. 537), Jackson, NJ.

Mon.-Thur. 11 a.m.-8 p.m.; Fri.-Sat. 10 a.m.-9 p.m.; Sun. 10 a.m.-7 p.m.

Website: www.premiumoutlets.com/outlets/outlet.asp?id=54

Jersey Gardens Mall - also known as The Mills at Jersey Gardens –Elizabeth, NJ (200 stores, restaurants, and services) Largest outlet mall in NJ, all under one roof. Lego Store, Michael Kors, Burlington, Marshalls, Timberland, Puma, Nike, Alex & Ani, Skechers, Vans, Crocs, Disney Store, and many more; AMC movie theater; restaurants; and a food court. Address is NJ Turnpike Exit 13A, 651 Kapkowski Road, Elizabeth, NJ.

Mon.-Thur. 11 a.m.-8 p.m.; Fri.-Sat. 10 a.m.-9 p.m.; Sun. 11 a.m.-7 p.m.

Website Link: <http://www.simon.com/mall/the-mills-at-jerseygardens/about>

Shopping

Menlo Park Mall - Edison, NJ (158 stores, restaurants, and services) A two level mall with Macy's, Nordstrom, Barnes & Noble, Banana Republic, Build-A-Bear Workshop, Disney, AMC Dine-In Theatre, and other stores; numerous eating establishments and a food court on Rt. 1 South.

Address is 55 Parsonage Rd., Edison, NJ.

Mon.-Thur. 11 a.m.-8 p.m.; Fri.-Sat. 10 a.m.-9 p.m.; Sun. 11 a.m.-7 p.m.

Website Link: <http://www.simon.com/mall/menlo-park-mall>

Quakerbridge Mall - Lawrenceville, NJ (90 stores, restaurants, and services). JC Penney, Macy's, Sephora, Old Navy, Vera Bradley, Victoria's Secret, Champs, and other stores and dining places on Rt. 1. Address is 3320 US Highway 1, Lawrenceville, NJ (northbound side)

Mon.-Thur. 11 a.m.-8 p.m.; Fri.-Sat. 10 a.m.-9 p.m.; Sun. 11 a.m.-6 p.m.

Website Link: <http://www.simon.com/mall/quaker-bridge-mall>

Woodbridge Center - Woodbridge, NJ (147 stores, restaurants, and services). Another one of NJ's largest 2 level malls with Macy's, Torrid, JC Penney, Aeropostale, Gertrude Hawk Chocolates, Forever 21, Pandora, Quails, lots more stores, restaurants, jewelry shops, etc. Mall is convenient to major roads and sits between Rt. 1 North and Rt. 9 South. Address is 250 Woodbridge Center Drive, Woodbridge, NJ.

Mon.-Thur. 11 a.m.-8 p.m.; Fri.-Sat. 10 a.m.-9 p.m.; Sun. 11 a.m.-7 p.m.

Website Link: www.woodbridgecenter.com

Theme Parks

Six Flag Parks are located next to each other.

Six Flags Great Adventure Theme Park and Safari – Jackson, NJ –

The country's largest Six Flags at over 500 acres; rides, kid's splash areas, concerts, shows, fireworks, shops, games of chance, restaurants, animal exhibits. Drive through safari with 1,200 animals from 6 continents in a natural setting. Now open – Zumanjaro: Drop of Doom – the tallest drop tower in the world with a 415 ft vertical drop at 90 mph. Newly opened for 2021 is the Jersey Devil, the world's tallest, fastest, and longest single rail coaster! Rides for all ages from calm to super thrilling Entrance is off Monmouth Rd. (Rt. 537) at 1 Six Flags Blvd.

Website: www.sixflags.com/greatadventure

Tri-State Member Roster as of July 2021

Mike Abbate	Marcia & Jim Halbert / Victoria & Pammie Halbert
Kathryn Abdis	
Drew Angus	John Kalymnios
Janet Applegate	Doug Linneman
Greg Arena	Robert Lippincott
Cherylann Brown / George Stan	Robert & Ethan Moraru
Maureen Broderick	Anthony Olszewski
Alan Bundy	Jeffrey Perry
Nelson Carpentier	Joe Riley
John J. Carroca	Lori Rill
Mary Ann Catanzaro / Reid Kirchberger	Frankie Rivera & Family
Carl & Barbara Comeau	Chuck Romano / Mike & Shawn Romano
Rae Cronin	Donna Rosciti
Joyce D'Accardi	Dawn Sandve
Frank & Hiromi DeGaetano	Slav & Mike Shcherbakov
Tom Dietrich	John & Greer Sucke
Donna DiMelia	Linda Tancs / Barry Panzarino
Rafael & Wendy Garcia	Bob & Kathy Thornber
Nancy Gingrich	Bob & Jo Vargo
Barbara Gold	Barbara Waterman
Selena Gusler	Norm & Joann Webster
Jose Guzman	Richard Werner

**"If you stood on your feet
24 hours a day, you'd expect a
really incredible meal, too."**



Nutri-Berries™, Everything there is to know about bird food...all rolled into one.

In the wild, hunting and gathering food is a bird's favorite activity. What attracts them? Certain colors, Specific shapes. Particular textures.

That's something avian veterinarian Dr. T. J. Lafeber knew early in his practice. The question was how to pin down the specifics of all those things and incorporate them into a ready to eat bird food.

The answer is found in Lafeber's Nutri-Berries.

For starters, Nutri-Berries are richly textured, vibrant and loaded with goodness in every crack and crevice. They're 100% nutritionally balanced. Most important, 96% of the berry gets eaten. Which means the nutrition ends up in the bird... and not on the floor.

Nutri-Berries. When you look around, anything less is just plain bird food. For your free new guide to good nutrition and the latest in Lafeber products, call 1-800-842-6445.

 **Lafeber**
— C O M P A N Y —

Lafeber Co., 24981 N. 1400 East Road, Cornell, IL 61319
www.lafeber.com

Theme Parks

Six Flags Hurricane Harbor Water Park – Jackson, NJ – 20 water slides, half mile long lazy river, and a one million gallon wave pool are all part of this 45 acre tropical themed water park. Plenty of fun for people of all ages. Entrance is off Monmouth Rd. (Rt. 537) on Six Flags Blvd.

Website: www.sixflags.com/hurricaneHarborNJ

Storybook Land – Egg Harbor Township, NJ – located 10 miles West of Atlantic City at 6415 Black Horse Pike (U.S. Routes 40 / 322). Children's all-time favorite stories and nursery rhymes are interspersed with family rides and attractions in a remarkably clean and enjoyable park setting.

Website: <http://storybookland.com/>

Keansburg, NJ – Keansburg Amusement Park / Runaway Rapids Water Park / Fishing Pier

275 Beachway Ave. - Close to 40 assorted rides in the amusement park, go carts, arcade, games of chance, numerous places to eat; over 18 assorted slides, toddler water play area, lazy river, spa pool areas, kiddie lagoon area, lifeguards, lounge chairs, full snack bar, lockers, and dressing rooms; Monday night free fireworks; privately run 2,500 ft. fishing pier with bait shop and gear rental available. Keansburg has a free beach but go here for the fun parks and fishing pier – not the beach.

Websites: <http://www.keansburgamusementpark.com>
www.keansburgfishingpier.com

Budgie Auction – Saturday

We will be having an auction of a few outstanding exhibition budgies from the top breeders in our regional area. The birds will be on display early Saturday morning for viewing and for initial bidding on paper. Later in the day, the birds will go up for final bidding from the audience. This is the most fun part of the show as the bidding gets fierce and grows higher! It is a great way to bring in an outcross for your breeding program. The auction is our club's biggest fundraiser of the year. The proceeds are what we use to go towards hosting a show, which is becoming cost prohibitive for many clubs. If anyone else would like to donate one of your better birds or a pair for the auction, the club would be very appreciative.

Going on at the Show

Birds are generally available from various breeders; an information table is set up; and vendors are possible. There will be prizes and some fun giveaways for exhibitors and guests. We will be adhering to whatever state or local covid mandates are in effect at the time of our show!

Budgie Information

Budgies, short for budgerigars and commonly referred to as parakeets, are the best known of all parrots. Technically, the broad term “parakeets” covers budgies and other species of small, long tailed parrots like rosellas, quakers, ringnecks and lineated. Calling them “budgerigars” is the proper word to use. Great numbers of budgies are kept as pets all over the world and there are sound reasons for their popularity. Their colors, delightful personalities, affectionate nature, entertaining behavior, and long lives help assure them a place in the hearts and lives of their human companions. They come in a wide variety of beautiful mutations, frequently talk, and bond readily with humans. Budgies breed freely in captivity and are widely available at a reasonable price. Their small size keeps their care inexpensive and easy. Seed mixes are readily available and supplementing this with a variety of other acceptable foods provides sound nutrition. They have an astonishing variety of vocalizations, from chirps and scolds to warbles and magical chatter. Their personalities range from shy or timid to feisty and assertive! In addition to the smaller standard budgies available for a modest price in most pet stores, there is also a variation known as the “English” budgie. These exhibition type birds are the result of many generations of careful breeding. They are quite a bit larger and perhaps a bit chunkier than standard “American” pet shop budgies, but they come in just as many spectacular colors. A worldwide hobby has grown up around the competitive showing of these birds where they are judged to a show standard of specific requirements and features. English budgies make just as wonderful pets as standard budgies, but they are more difficult to obtain. Ordinarily, they are available primarily from show breeders and are usually a little more expensive than their smaller cousins. Budgies can be wonderful pets and delightful companions, not only as starter birds, but as birds worthy of a lifelong commitment in their own right. Just as the word parakeet should not be used when really referring to budgerigars, the terms “English” and “American” are really not appropriate anymore. For one thing, budgerigars are native only to Australia. They first made their way in the 1840s to England. In England, they were selectively bred to adhere to a set of determined standards for exhibition purposes. As these common little budgerigars took on a larger distinctive look, they were sought after worldwide, and the “English” budgie was imported to other countries. After their arrival in the USA, standard sized budgies were referred to as “American” to make it clear which size bird was being talked about. These were commercially bred by the thousands for the pet trade and widely available. Outstanding exhibition birds are now found across the globe. The two kinds of budgies should be referred to as exhibition or show type and pet store, standard or commercial type, when referring to size and type.



Scarlett®
Premium Pet Food Since 1869

Providing the Highest Quality
Pet Food Since 1869

Premium Quality Ingredients
Sourced and Manufactured in the USA

Manufactured By: Moyer & Son, Inc.
113 E. Reliance Rd. • P.O. Box 64198 • Souderton, PA 18964-0198
www.scarlettpetfood.com • 800.345.0419



**YOUR TRUSTED SOURCE FOR THE BEST IN
PETS PRODUCTS SINCE 1955**

Founded by Rolf C. Hagen in 1955, Hagen has grown to become the world's largest privately-owned, multi-national pet products manufacturer and distributor. We are driven by a common bond of love and compassion for animals. Underlying our entire philosophy is one simple and immutable fact: Pets are not only the heart of our business, - they are the reason we are in business. Visit us at:

<http://usa.hagen.com/>

Good Luck!

Comments and Suggestions

We would like to receive your feedback and suggestions on our shows. Tell us what you did or did not like or share your idea on how we might improve the show. Be sure and sign our guest pages so that we may add you to our lists for receiving news in the hobby and dates for upcoming events. Please help us get the word out to other people interested in budgerigars by promoting this fantastic hobby, our club, and of course next year's show. Talk to one of our club members or send an email to us at: TRISTATEBUDGIE@aol.com.

Show Information

Introduction: This show is only open to budgerigars, *Melopsittacus undulatus*. Native to Australia and bred for both pet and exhibition purposes. Depending on where you are from, they are known as budgerigars, budgies, English parakeets, American parakeets, and shell or grass parakeets. Each bird may be entered in only one category, division, and class. Birds entered incorrectly may be disqualified but attempts will be made to correct errors before the correct class is judged. Ask for help if unsure of how or where to enter birds. Exhibitors may not enter a division below what they are qualified for. If entering a higher division, you must stay at that level for future shows. Show committee reserves the right to check band numbers or refuse birds considered sick or detrimental to the show.

Categories: Two separate categories of birds will be judged:

BAA Divisions – Exhibition Type Classes. This one is for exhibition type budgerigars that have been bred by the exhibitor and banded with seamless coded bands, which are traceable to that breeder. The guidelines used are set forth in the recently revised BAA Schedule of Classes, which is provided. There are five division levels of classes - Rare, Junior, Novice, Intermediate, and Champion. These birds will ultimately vie for Best in Show (BIS) awards and Best of Variety Challenge Certificates (CC).

Rare Mutation Division – Sections 24 – 38

This division contains mutations and colors considered rare and exhibitors may be from any of the other four levels of competition within BAA. Rare birds are ranked for placement without regard to exhibitor status. Winning birds in the Rare Division are compared later to the best birds in the exhibitor's respective division for possible placement there and on the BIS bench.

17

TSBS Division – 2 Open Pet Classes – on Saturday Only

This category has no requirements for birds to be banded at all or bred by the exhibitor. It is open to the larger exhibition type budgies as well as the smaller common standard pet shop birds. You may enter a bird into either pet division; depending on what type of award you are trying to win. Keep in mind, a standard type of pet budgie will not fairly compete against the larger exhibition birds in **Class A**. A large exhibition type would not have an advantage in **Class B**. Birds with clipped wings, multiple throat spots or other faults may be shown but this may result in a lower ranking in **Class A**, where the birds are expected to meet the show standard requirements. Children entering birds in **Class A** may be disappointed if their bird places low or not at all. Birds are entered regardless of mutation, gender, or age; there are no calculated points or advancement.

Class A: Pet - Winners Judged on Show Quality

BAA judging criteria is used. The best ten birds are selected and ranked based solely on show quality appearance; not pet appeal.

Class B: Pet - Winners Judged on Pet Appeal

Friendlier, more-creative criteria is used to award certificates based on pet appeal; not show quality. Examples are Most Colorful, Most Acrobatic, Friendliest, Best Talker, etc.

Entry Guidelines for all Birds

Entry Period: All birds must be entered between the hours of 7:00 and 10:00 AM on Saturday and between 7:00 and 9:00 A.M. on Sunday. Judging will begin soon after. No pet birds accepted on Sunday.

Fee: Each exhibitor pays a daily \$3 entry fee per bird. There is no fee beyond 15 birds per exhibitor, so the charge to enter is capped at \$45 per day. The Show Secretary shall provide a Show Catalog / Schedule of Classes, and Entry Form. Upon payment of entry fees, the appropriate division's numbered Show Cage Tags will be given.

Cages:

BAA Divisions - One bird per standard show cage – unless exhibiting a pair; no marks, names, toys, seed-water cups on or in cage; seed allowed on cage bottom. Exhibitors provide their own cages and seed for bottom.

TSBS Pet Divisions - any cage (smaller preferred); no more than two birds in a cage; no names visible. Toys, seed, or water cups are allowed. Exhibitors will provide their own cages.

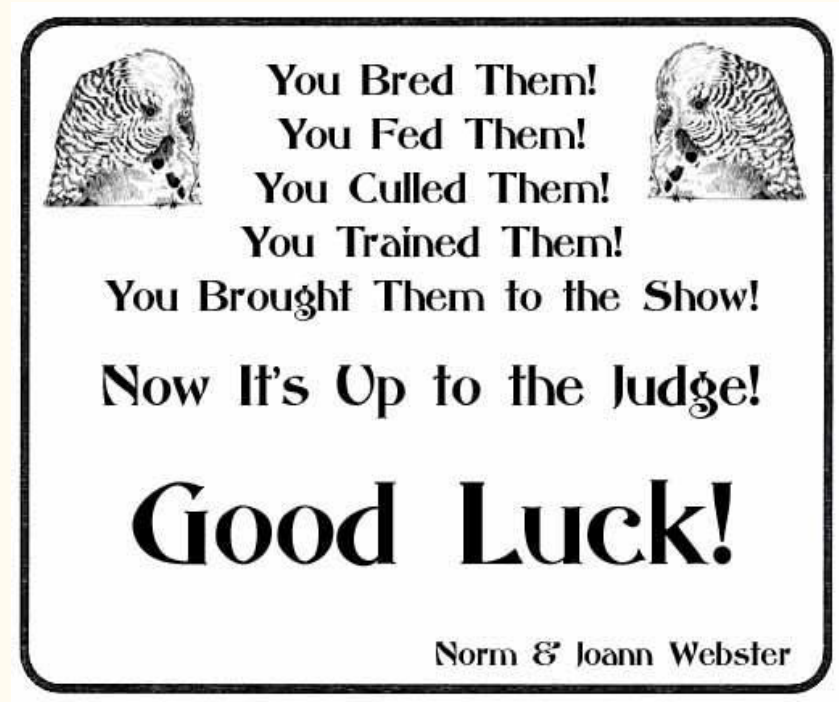
18

Good luck to everyone!

Greg Arena

BAA Band Code "GMA"

E-mail: garena6@verizon.net



51

OASIS PRODUCTS



SMALL ANIMAL and BIRD WATER BOTTLES

WATER BOTTLE PROTECTIVE SHIELDS and HOLDERS

FEEDS and SUPPLEMENTS

MEDICATIONS

BEDDING, SAFETY FLOORING and CAGE ACCESSORIES

PRODUCTS for DOGS

AQUARIUM / TERRARIUM / TANK COVERS

MISCELLANEOUS PRODUCTS and REPLACEMENT PARTS

**Oasis**[®] *QUALITY PET PRODUCTS*

PRODUCT LIST Oasis products are available from local dealers handling small animal pet products. For further information on product availability contact us through one of the following-
e-mail: info@kordon.com • telephone: (800) 877-7387 • fax: (510) 784-0945

Visit us on the web at: www.kordon.com

As a gesture of good will to our club, Oasis / Kordon will extend dealer pricing to TSBS members with proof of membership. TSBS will provide you with such proof as may be required.

Birds: Must be bred by the exhibitor, wearing closed bands traceable to that exhibitor. This does not apply to pet birds.

Classes: Birds must be entered according to the current revised BAA Schedule of Classes provided. Birds entered in a "young" class must wear a 2021 closed band. This does not apply to pet birds.

Entry Process: Two copies of the form must be completely filled out (or a two part carbon copy). Name, address, band code, division, section, class, and bird's description must be given by BAA division exhibitors on entry forms and show tags. TSBS Pet Division exhibitors only need to fill out their name and address and the bird's description if known, on entry forms and tags. Hang tag for correct bird on left side of cage on horizontal cage bar. Stewards will then check forms, tags, and birds; staple tags shut; and take the form to the Show Secretary. At this point, the exhibitor may no longer touch exhibits. The Steward then takes birds to the staging area where they are sorted into the order of how the divisions and classes will be sent to the bench for judging.

Judging

Providing there are birds entered in each division, judging will follow a certain order. It will start with Pet Class A and then B; Followed by BAA classes starting with Rare Mutation, Junior, Novice, Intermediate, Champion, Best in Show, and Challenge Certificate (CC) determination.

BAA Divisions: Each will have its sections judged in numerical order with the classes in each section done the same way. Class winners are grouped to determine section winners. Then section winners are worked down to a division top ten but can be up to thirteen birds. BAA format calls for the division winners to include a first place known as Best, a Best Opposite Sex, a Best Young and a Best Opposite Sex Young, provided that birds to fill those positions were entered. All BAA Division winners will be compared for possible placement on the Best in Show bench, which follows the same format. CC winners are challenged as each division level is judged and will be determined at Best in Show selection; however, certain criteria must be met.

Pet Divisions: Class A birds are ranked 1st to 10th place using the same criteria and comparison to other birds as in the BAA classes. Class B shall receive merit awards based only on pet quality and appeal.

Note: There may be a reason to deviate from this planned order of judging on the day of the show due to judge's discretion or special circumstance.

Display of Winning Birds

No cages will be removed from the final benches other than for photographs at the time exhibitors are invited to do so and then the cage will be put back into its spot on the bench. All exhibitors entering this show agree to allow birds on the final winning bench – for BAA Divisions, Best in Show, and Challenge Certificates – to remain on display for viewing and photographs, for no less than 20 minutes. This is for the enjoyment and consideration of all those present!

Security / Checking In and Checking Out

Only the Judge or Stewards will handle the show cages once taken from you. Exhibitors and guests will not be permitted in the staging area at all and cannot go near the bench during the judging process. All BAA Division birds entered must remain in the show until the end of all judging each day. Only birds entered in the Pet Divisions may be retrieved immediately after photos and the judging of their divisions if desired.

The Stewards will also be responsible for returning all birds back to you in the afternoon. The end of a show can become very chaotic and people at other shows have left without one of their birds or with the wrong bird. It became necessary to put precautions into place that will not be that much of an inconvenience to you. It is of greater importance to us that everyone leaves our show with all of their birds. We want everyone to go home with the idea that they had a good experience and will want to return. It is our wish that other clubs begin using a similar approach in the way that birds are checked out.

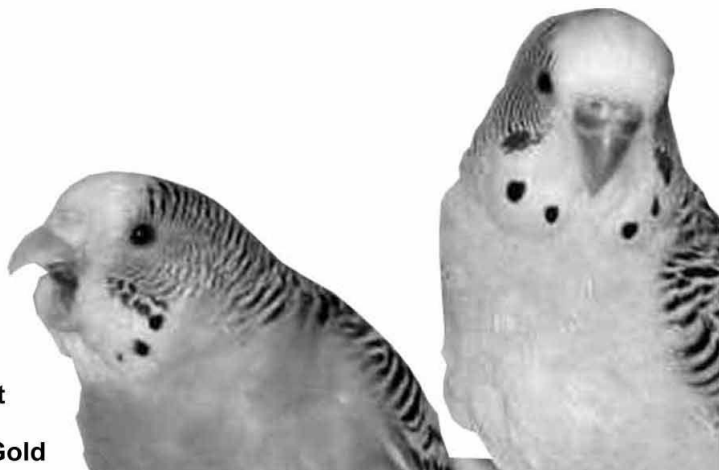
End of Show

Familiarize yourselves in advance with the steps on how the show will close and what security measures will take place. Your patience and cooperation are requested.

1. The judge marks tags with final choices; ribbons and awards are given out.
2. The names and final placing of winners are revealed; any announcements are made.
3. The audience members will remain seated and stay away from the winning birds while only the working show personnel - including Stewards, Photographers, Award Workers, Kitchen Help, Show Secretary, etc. - get called to the bench to view their birds or take pictures for up to 10 minutes.

**Best Wishes
for a
Great Show
Tri-State!**

**from
Barbara Gold
and her birds**



Robert
and
Barbara Gold

Birds by Joe

Specializing in Hand Raised Baby Parrots

265 Rt. 22
Greenbrook, NJ 08812

732-764-BIRD

Visit us on Facebook

www.birdsbyjoe.com

End of Show

4. After the show personnel have viewed the birds, they will return to their posts to work. Remaining exhibitors and guests will be invited to the bench to view and photograph birds for 10 minutes. After the viewing period, everyone will be asked to step away, so the Stewards may move about freely to retrieve birds from the final bench.
5. Once the Stewards have returned to their stations after viewing the winners, exhibitors will form a line at the designated "check out" area. Each exhibitor will then hand their copy of the entry form to a Steward and then step away. Out of courtesy toward our guests, club members are asked to wait until after all other exhibitors retrieve their birds.
6. A Steward will first retrieve an exhibitor's birds which have not won awards from the rear staging area. Birds will not begin to be removed from the winning show bench until after the minimum 20-minute viewing period has passed! When your birds have been gathered, you will be called back to the "pickup" area. Identification may be asked for if you are unfamiliar to the Steward. Your entry form will be checked off as your show cages are returned to you. As soon as the exhibitor and Steward are confident that all birds have been correctly returned, the exhibitor must move them immediately from the pickup area. A Steward will gladly assist you to an area where you can cage up your birds or help you to your car.
7. Do not leave your property or birds unattended once you have them back in your possession. Have someone trusted watch them for you while you are using the restroom, selling birds, packing your vehicle, or helping. Remember that cars get very hot inside and livestock can perish very fast.
8. You are welcome to leave your birds in the hall overnight with a locked building and gate but the members of Tri-State or the club itself will not be liable for any loss of possessions or livestock. You acknowledge that you are leaving them at your own risk. On Sunday, everyone is asked to gather up their belongings and exit the building as soon as possible after the show is over, unless you are helping with the cleanup of the hall. Please do not wait until the end of the day to sell or buy birds or to chat when we are attempting to clean the hall. At the end of the Sunday show, TSBS members would like to quickly break down everything, clean the hall, and be on our way home. We very much enjoy this hobby and the people in it. However, we think you will understand that many of us will be exhausted after a long show weekend with preparation that starts for a few of us on Thursday or before.

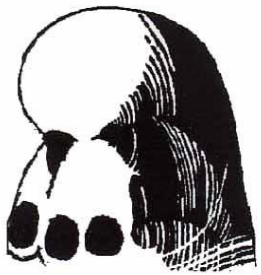
Class and Section place awards are now colored dots for all divisions. Normally, blue is 1st, red is 2nd, and yellow is 3rd. The club phased out the awarding of 1st, 2nd, and 3rd place class ribbons and section rosettes for all Divisions. They were eliminated because of the incredible additional cost to the club and because using them adds to the length of the show. We still have some of them and Best of Variety rosettes left that we would like to use up rather than put them in the trash. If anyone winning a class or section dot from any divisions would like to exchange the dots for a ribbon or rosette, see Marcia Halbert with your show tag at the end of each day's show. Ribbons and rosettes will be distributed until supplies run out on a first come basis.

Responsibility Waiver

Entry and payment constitute acceptance of all show rules. TSBS and its members accept no liability or responsibility for loss or damage to exhibited birds, property or for injuries to any members, exhibitors, vendors, or guests either at, or in route to or from, this show or any meeting or function of the club. Any bird entered with entry fee paid, that is deemed sick or should demise at some point after entry or during the show, or any exhibitor having an emergency reason for having to remove their bird or birds from competition, will not have entry fees refunded.

Support our Advertisers and Vendors

We would like to remind all of you that it takes a good deal of money to put on a show. It is a tremendous help to a club to have individuals or companies that place catalog ads or contribute products to our prize table or discount services, fees, or prices of their products that we may need to purchase. If you see an ad in this show catalog, please consider patronizing the breeder and businesses and let them know that you saw their ad in our catalog or their products at our show. This is also true of any vendors with tables at our shows. They may have paid for advertising or space or donated something to our club. Giving them your business helps them know that their donation has been noticed and appreciated and if they receive business as a result, it is likely that company will continue to support us in the future. Many companies have stopped sending goods to shows because of budget cuts, shrinking sales or lower profits and the fact that they feel there is often no return on their investment. Every time a company donates in some form, it is a type of advertising. They lose money by being generous and there is no reason to give things away if there is no future business generated.



Chuck Romano

22 Innerhill Lane
Matawan, NJ 07747

Phone 732-583-1591
Email: Chuck83R@AOL.com

Champion Breeder & Exhibitor



Where Normals Are Rare and Rares Are Normal



Marcia * Jim * Victoria * Pammie

Spotswood, NJ

732-416-0796

52G

searay240v@aol.com

World of Birds

15 Perry Street
Chester, NJ 07930

908-879-2291

www.worldofbirds.com

**Where you will find hand fed baby parrots
and a huge selection of toys, foods and
accessories for all types of birds.**

'Established 1972'

We're on Facebook!

Best Wishes

To All Entrants and

Supporters of the

Tri-State Budgerigar Society

2021 Shows

Carl Comeau



TWiB.tv

This Week in Birds

Anthony Olszewski

anthony@twib.tv

297 Griffith St.
Jersey City, NJ 07307

L&M BIRD LEG BANDS INCORPORATED

Home Catalog Order Size Guide View Brochure Product Gallery

BIRD IDENTIFICATION BANDS

We offer a wide variety of Bird Identification Bands ranging in size from 3/32" I.D. (2.4mm) for finches to 3/4" I.D. (19.45mm) for large birds.

Plastic, Aluminum, and Stainless Steel Bands in a variety of sizes. The metal ones can be marked with your breeder code and other markings, produced to your specifications within what we offer.

Also available are a variety of bird keeping and breeding supplies such as syringes, pipettes and nets. Check our other pages for specifics.

Please see our On-line Product Catalog and Band Size Guide for further details. An on-line order form is available [Download PDF Here](#) and your order must be processed via telephone, fax, or mail.

**Welcome to our New Website
Please Bookmark This Page**

L&M Bird Leg Bands, Inc.
PO Box 2636
San Bernardino, CA 92406 U.S.A.
Telephone (909) 882-4649
Fax (909) 882-5231

Hours of Operation
Open Monday Thru Friday
at 9am - Pacific Time
Closed Weekends
and all Holidays

L&M Bird Leg Bands, Inc. • PO Box 2636, San Bernardino, CA 92406 U.S.A. • (909) 882-4649 • Fax (909) 882-5231

Best of Luck
to all exhibitors
at the 2021
Tri-State
Budgerigar
Society
Shows

Barbara Comeau

For over twenty years, Golden Farm Products has been growing spray millet for the most demanding exotic bird owners. We have developed and are continually improving our own varieties of seed based on our customers' feedback. Our spray millet's quality is a combination of unique geography and the extensive experience of the producer, much like a premium wine from the Napa Valley.

We grow our California Spray Millet in the fertile soil just north of the Sacramento River Delta. The unique combination of warm, cloudless days and nights cooled by the delta breeze produces the highest quality spray millet available anywhere.

Here at Golden Farm Products, we take the responsibility of feeding our customers' exotic birds with pride and determination. We harvest the crop every year by hand with the utmost care taken to preserve the integrity of the seed heads. It is then sorted again by knowing hands to ensure that only the highest quality spray millet gets packed into the trademarked yellow boxes bearing the Golden Farm Products logo. Finally, the spray millet is stored under very specific temperature and humidity to guarantee that the integrity of the product is maintained over the course of the year.

Please feel free to explore our site. www.californiaspraymillet.com

We hope you enjoy our millet!

Golden Farm Products

PHONE: (530)795-2273 FAX (530)795-1631

P.O. Box 838 Winters CA 95694

26

Frank and Hiromi DeGaetano

*hope that everyone in
attendance for the
Tri-State Budgerigar Society's
2021 double shows on
August 20 and 21
has a wonderful
show experience.*

Candling without handling

Now with the recessed Candler Lamp!

- *Better Illumination
- *Less Light Loss
- *Longer Life

Candler comes with a protective cover that may be used as a handle extension (Maximum length 26")


The MDS Probe-Lite™ Candling Light features a high intensity, prefocused lamp on the end of a 10" flexible shaft. The new-style candler lamp is recessed in a metal sleeve to fit the egg contour. All new Candler Lights come with the new-style lamp – or order replacement lamps for your existing Candles.

Now packaged with heavy duty AA alkaline batteries!

MDS Medical Diagnostic Services, Inc.
P.O. Box 1441 Brandon, Florida 33509

Phone (813) 653-1180
FAX (813) 684-5953

Flexible Egg Candler 010-C





SUPPLYING BIRD BREEDERS SINCE 1945



Bird Bands

Manufacturer of Aluminum Bands for Birds. All sizes of Aluminum Avian Identification Leg Bands from the smallest Finch, Canary, Cockatiel, Love Bird, Parakeet and Budgie to the large Parrots (Psittacines).

We start accepting orders for the next year marked leg bands August 1st of each year.

Our first release of the next year marked leg bands is the second week of December each year.

From October through March of each year please allow up to 7 weeks for order production!

BIRD BREEDING SUPPLIES

Also specializing in plastic bands, cage accessories, plastic nests, wicker nests, nesting material, nest pads, dummy eggs, avian health products, cage bird seed diets, hand feeding supplies, nets, bird feeders and drinkers, avian cleaning supplies and much more.

DISTRIBUTORS OF:

MORNING BIRD PRODUCTS

(MADE IN THE USA)

RED BIRD PRODUCTS, Inc.

P.O. BOX 376

MOUNT AUKUMN, CA 95656-0376

530-620-7440

For Healthier, Better Performing Birds, Specify...

PrimaLac® Microbials for Caged Birds



Most caged birds need help maintaining proper microbial balance to control a wide range of bad bacteria.

Recommended by veterinarians as an aid in the prevention and control of E. coli and Salmonella in caged birds, PrimaLac colonizes the intestinal tract with good bacteria resulting in firmer droppings and improved feather quality.

Field Tested. Field Proven.

Since 1974, Star-Labs has been committed to improving avian health and performance with PrimaLac Microbial Cultures. Today, Star-Labs is the leader in Direct-Fed Microbials for caged birds. The unique blend of beneficial bacteria in PrimaLac can offer caged bird breeders an edge in raising better performing, healthier birds.

*Compatible with other medications.



A source of live (viable) naturally occurring microorganisms

To order PrimaLac Caged Bird Water Soluble or for more information, contact:

Star-Labs

P.O. Box 77 • Clarksdale, MO 64430
800-894-5396 • e-mail: starlabs@comcast.net



Star-Labs
<https://primalac.com>

27

P.O. Box 77
Clarksdale, MO 64430
Phone: 800-894-5396

Morning Bird Products



Morning Bird Products

Morning **BIRD**
BIRD CARE PRODUCTS

Morning Bird
P.O. Box 794
Morgan Hill, CA 95038

Phone: 408-776-7470

MorningBird@MorningBirdProducts.com

KAYTEE

exact[®] Balance

Each species-specific formula is made in the USA and backed by over two decades of research and development from Kaytee, the originators and experts in extruded bird diets.

**exact nutrients.
exact nutrition.**

- DHA Omega-3 to support heart, brain and visual functions
- Antioxidants for general health and immune support
- Prebiotics & Probiotics to aid in digestive health
- Chelated Minerals to promote healthy feathers

Proudly made in the USA • kaytee.com • 1-800-kaytee-1

Bob Vargo



Breeder and Exhibitor European

Budgies: Contact @ 908-370-1164

Hope to see everyone at the shows

Good luck!

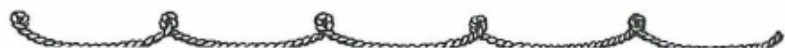


Bird seed and dry goods. We carry a wide variety of domestic seed in economy and enriched. We deliver from Maine to Florida and as far west as St. Louis. Delivery is available with a minimum of a 2,000 pound order.

Show Sponsors:

Lizzie Mae 330-473-4912

Lizziemaesbirdseed.com



VOLKMAN SEED FACTORY



Teri Applegate
Territory Manager



P.O. Box 245

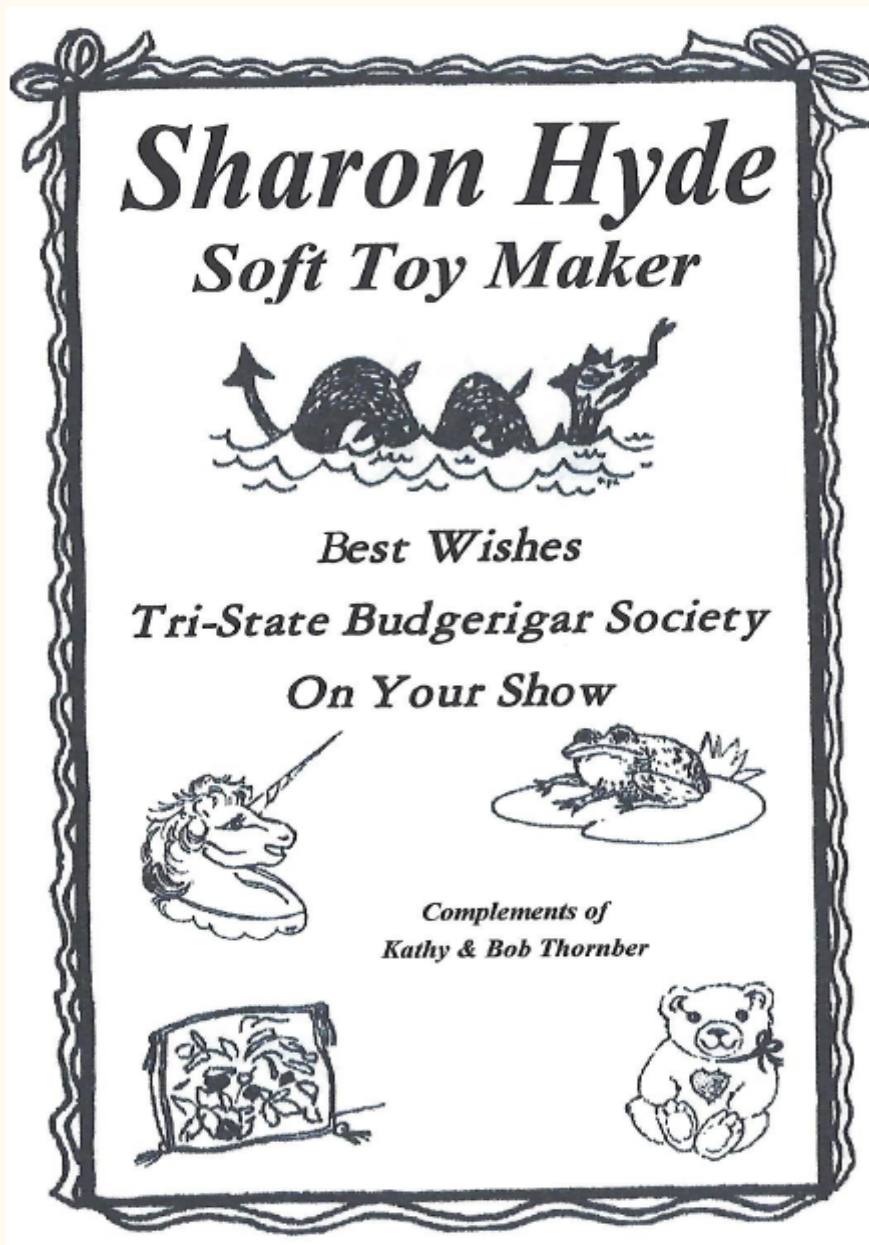
Ceres, CA 95307

Email: Teri.Applegate@seedfactory.com

Office: (209) 634-8522

Cell: (209) 277-2373

Fax: (209) 634-8525



Program of Events for Saturday, August 21, 2021

Doors Open/Breakfast	7:00 AM
Entry of Birds	7:00 AM to 10:00 AM
Judging Begins (Pet Divisions First)	10:30 AM (approx.)
Lunch and Auction (About 1 Hour)	Between 11:30 AM and 1:30 PM
Completion of Judging	4:30 PM (approx.)
Announcements Awards Prize Distribution	During and Upon Completion of Judging
Leave for Dinner Lock up Hall	Following Judging 5:30 PM (approx.)

Program of Events for Sunday, August 22, 2021

Doors Open/Breakfast	7:00 AM
Entry of Birds	7:00 AM to 9:00 AM
Judging Begins (Rare Division First)	9:30 AM (approx.)
Lunch (About 1 Hour)	Between 11:30 AM and 1:00 PM
Completion of Judging	4:00 PM (approx.)
Announcements Awards Prize Distribution Cake	During and Upon Completion of Judging
Break Down Staging Clean and Lock Up Hall	After Birds are Returned and Exhibitors Head Home

Best of Luck Everyone

Joyce D'Accardi



In Loving Memory of my Husband
George S. Applegate, III

9/17/1930 – 1/18/2013



Janet Applegate

Our *Quintrex* HARMONY provides all the vitamins, major & minor minerals, & trace elements essential to a high quality diet, especially basic seed blend diets. It was formulated & developed to replace an imported product no longer available in the U.S., which was very popular with top bird breeders. TRY IT, your birds will like it!

Quintrex™ Harmony

Quintrex™ Harmony is a palatable vitamin-mineral-protein supplement specifically formulated to provide all the necessary nutrients to keep your cage bird in optimum condition.

Ingredients: Vitamin A Palmitate, D-Activated Animal Sterol, D-Alpha Tocopheryl Acetate, Menadione Sodium Bisulfite Complex, Ascorbic Acid, Thiamin HCL, Riboflavin, Niacin, dl-Calcium Pantothenate, Pyridoxine HCL, Folic Acid, Vitamin B-12, Biotin Inositol, Choline Chloride, Para Amino Benzoic Acid, Magnesium Oxide, Manganese Sulfate, Iron Sulfate, Iron Oxide, Copper Sulfate, Calcium Iodate, Cobalt Carbonate, Zinc Oxide, Sodium Selenite, Mono Sodium Phosphate, Sodium Chloride, calcium Carbonate, Meat and Bone Meal, Dormantized Yeast, Brewers Dried Yeast, Corn Distillers Dried Grains with Solubles, Dextrose, Dried Bacillus Licheniformis Fermentation Product, Dried Bacillus Subtilis Fermentation Product, Dried Whey, Silicon Dioxide, Sodium Sulfate, Vegetable Oil and Flavor.

Guaranteed: In each pound, not less than	Calcium Pantothenate	15mg	Zinc	750mg
Vitamin A 40,000 I.U.	Vitamin B-12	5mg	Iron	600mg
Vitamin D-3 45,000	Choline Chloride	600mg	Magnesium	600mg
Vitamin C 35mg	Folic Acid	2.1mg	Manganese	600mg
Vitamin E 10 I.U.	Inositol	800mg	Iodine	200mg
Vitamin K 15mg	Biotin	400mcg	Copper	80mg
Thiamin HCL 100mg	Para Amino Benzoic Acid	400mg	Cobalt	8mg
Riboflavin 70mg	Calcium	75mg	Selenium	200mcg
Pyridoxine 7mg	Phosphorus	1500mg	Protein	50gm
Niacin 100mg	Sodium Chloride	22gm	Carbohydrate	20gm

Directions: Add to the seed mix at the rate of one tablespoon per two pounds of feed, for routine use. For breeding or other stress periods, increase the Harmony by 50%. Keep in cool dry place.

A Product Of

Manufacturers of Superior Animal Feeds

Nutritional

SOUTH WHITLEY, INDIANA 46787

RESEARCH ASSOCIATES INC.

1-800-456-4931

Re-acquaint yourself with some of our other great products like: AQUA-VITE (water dispersible multi-vitamins), AQUA-LYTE (water soluble minerals & electrolytes), FLAMEN OIL (color enhancing supplement), BIRDIE BANQUET, MITE-Y-MITE Feet & Leg Salve, BIRDIE DE-LICER, *Quintrex* NESTLING FOOD, BIRDIE BREEDER BOOSTER, 32% GRO-VITE, BIRDIE CARA-VITE, as well as our seed & conditioning mixes. We ship throughout the U.S. & to Canada & other countries. We take VISA, MASTERCARD, DISCOVER, & AMERICAN EXPRESS. PHONE: 800-456-4931; E-MAIL: nutritionsearch@earthlink.net or nutritionsearch@comcast.net; U.S. MAIL: NUTRITIONAL RESEARCH ASSOCIATES, INC., P. O. Box 354, South Whitley, IN 46787.

Leadership & Responsibilities

TSBS President	Marcia Halbert
TSBS Vice President	Mike Shcherbakov
TSBS Secretary	Chuck Romano
TSBS Treasurer	Marcia Halbert
Show Manager / Show Secretary	Chuck Romano Greg Arena, Victoria Halbert
Website	Slav Shcherbakov
Facebook	Marcia Halbert, Alan Bundy
Bench Stewards Cage Stewards Check In & Out	Slav & Mike Shcherbakov Bob Thornber, Nelson Carpentier Jose Guzman, Drew Angus, John Carroca
Hosts / Greeters Club Information	Joyce D'Accardi, Kathy Thornber, Kathy Abdis, Nancy Gingrich, Lori Rill
Exhibition Hobby Ambassadors	Maureen Broderick Barbara Waterman
Product Displays	Bob & Jo Vargo Mike Abbate
Breakfast	Slav & Mike Shcherbakov
Awards / Advertising	Marcia Halbert
Food / Beverages Hospitality	Jim & Marcia Halbert Doug Linneman Drew & Ann Angus
Show Photographer	All Members
Show Catalog	Marcia Halbert Slav & Mike Shcherbakov
Set Up / Clean Up	Jim & Marcia Halbert Greg Arena, Rich Werner Slav & Mike Shcherbakov Doug Linneman
Everything Else!	Jim, Victoria & Pammie Halbert

And to the many helpers both in and outside the club, who are not listed above, and want to help, your assistance before and at our show is always greatly appreciated.

Show Awards

Best in Show Awards		
Placements	BAA	TSBS
Best in Show	Gold Medal & Purple Ribbon	Rosette
Best Opposite Sex	Silver Medal & Purple/White Ribbon	Rosette
Best Young	None	Rosette
Best Young Opp. Sex	None	Rosette
2 nd thru 10th	None	Rosette
Best of Variety Awards		
Best bird overall from each section from all Divisions combined.	BAA Challenge Certificates	** Rosette
Division Awards		
Best Rare Mutation	Bronze Medal & Gold Ribbon	Rosette
Best Champion	None	Rosette
Best Intermediate	Bronze Medal & Royal Blue Ribbon	Rosette
Best Novice	Bronze Medal & Green Ribbon	Rosette
Best Junior	Bronze Medal & Purple Ribbon	Rosette
Best Opp. Sex	None	Rosette
Best Young & Opp. Sex	None	Rosette
2nd thru 10th	None	Rosette
Section Awards		
Best thru 3 rd	None	Place Sticker
Class Awards		
Best thru 3 rd	None	Place Sticker
* Open Pet Division Awards		
A) Large Exhibition Type and B) Small Pet Type		
Best thru 10th	None	Ribbon
Merit Category Color, Talk etc.	None	Certificate

* Saturday only

** Closeout Rosette Award

BUDGERIGAR ASSOCIATION OF AMERICA

SCHEDULE OF CLASSES

UPDATED AS OF 2020

NORMAL DIVISION VARIETIES					
#	SECTION VARIETY	OLD COCK	YOUNG COCK	OLD HEN	YOUNG HEN
1	LIGHT GREEN	101	102	103	104
2	DARK GREEN	201	202	203	204
3	SKY	301	302	303	304
4	COBALT	401	402	403	404
5	GREY GREEN	501	502	503	504
6	GREY	601	602	603	604
7	OPALINE GREEN Light, Dark, Grey Green	701	702	703	704
8	OPALINE BLUE Sky, Cobalt, Grey	801	802	803	804
9	CINNAMON GREEN Light, Dark, Grey Green	901	902	903	904
10	CINNAMON BLUE Sky, Cobalt, Grey	1001	1002	1003	1004
11	OPALINE CINNAMON Sections, 1,2,3,4,5,6	1101	1102	1103	1104
12	LUTINO	1201	1202	1203	1204
13	ALBINO Including Yellowface	1301	1302	1303	1304
14	SPANGLE Including Opaline, Cinnamon, Opaline Cinnamon, Yellowface	1401	1402	1403	1404
15	DF SPANGLE Including Yellowface	1501	1502	1503	1504
16	DOMINANT PIED Including Opaline, Cinnamon, Opaline Cinnamon, Yellowface	1601	1602	1603	1604
17	YELLOWFACE Sections 3,4,6,8,10,11,21,22	1701	1702	1703	1704
18	TEXAS CLEARBODY Including Opaline, Cinnamon, Opaline Cinnamon, Yellowface	1801	1802	1803	1804
19	YELLOW Including Opaline, Cinnamon, Opaline Cinnamon	1901	1902	1903	1904
20	WHITE Including Opaline, Cinnamon, Opaline Cinnamon, Yellowface	2001	2002	2003	2004
21	OLIVE/MAUVE Including Opaline, Cinnamon, Opaline Cinnamon	2101	2102	2103	2104
22	VIOLET Including Opaline, Cinnamon, Opaline Cinnamon	2201	2202	2203	2204
23	AOV/AOC/COMPOSITE Composite of two or more Varieties from section 14, 16, 18, 19, 20	2301	2302	2303	2304

RARE DIVISION VARIETIES					
#	SECTION VARIETY	OLD COCK	YOUNG COCK	OLD HEN	YOUNG HEN
24	CLEARWING	2401	2402	2403	2404
25	GREYWING	2501	2502	2503	2504
26	FBC GREYWING	2601	2602	2603	2604
27	RAINBOW	2701	2702	2703	2704
28	RECESSIVE PIED	2801	2802	2803	2804
29	DUTCH/CLEARFLIGHT PIED	2901	2902	2903	2904
30	FROSTED PIED	3001	3002	3003	3004
31	DARKEYED CLEAR	3101	3102	3103	3104
32	GERMAN FALLOW	3201	3202	3203	3204
	ENGLISH FALLOW	3205	3206	3207	3208
33	LACEWING	3301	3302	3303	3304
34	CRESTED	3401	3402	3403	3404
35	DOUBLE FACTOR ANTHRACITE	3501	3502	3503	3504
36	SLATE	3601	3602	3603	3604
37	EASLEY CLEARBODY	3701	3702	3703	3704
38	AORV, RARE COMPOSITE Composite with 1 or more Rare Varieties Opaline, Cinnamon and Yellowface not considered Varieties	3801	3802	3803	3804
PAIRS - SECTION & CLASS 3900 Must be a cock and hen of the same Variety and color.					